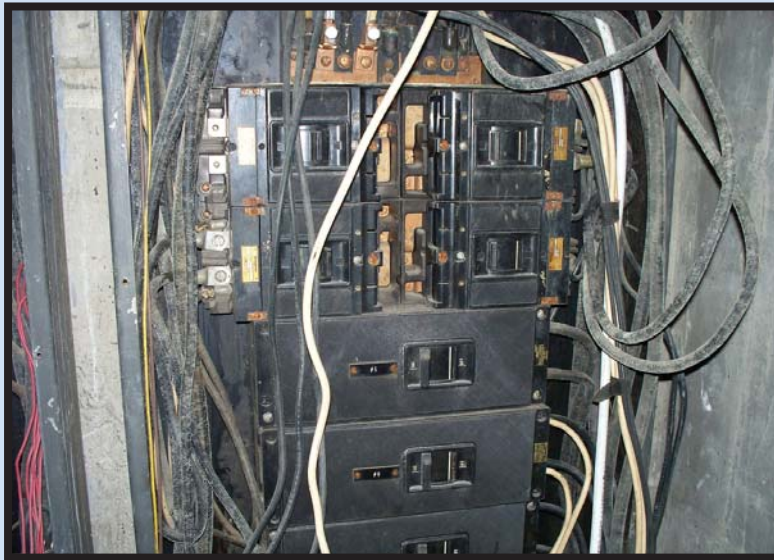




Delta Engineers, Architects, & Land Surveyors, P.C.

Creedmoor Psychiatric Center receives an upgrade to the existing site electrical distribution system



Existing Electrical System Conditions



Replacement Electrical Distribution System

We are a seamless extension of our clients' organizations

Delta Engineers, Architects, & Land Surveyors, PC provides design and construction services for the new electrical distribution system at Creedmoor Psychiatric Center.

The Creedmoor Psychiatric Center is located in Queens Village, NY. The facility is comprised of over 50 buildings. Delta Engineers, Architects, & Land Surveyors, P.C. (Delta) is providing service upgrades to the site electrical distribution system in buildings 4, 18, 19, 21, 22, 60, 61, 66, 67, 68, 73, and 100.

The electrical services are being upgraded from a 2,400 volt supply system to a 13,800 volt supply system for twelve separate buildings under this contract. The conversion includes the installation of outdoor pad mounted transformers to replace the existing indoor seventy-year old transformers. In addition, each building receives a new secondary-voltage electrical service and the power monitoring equipment to permit energy reductions for the facility. The project design not only provides updated electrical service panel boards and switchboards to remove violations of the National Electrical Code and associated safety issues, but also provides additional circuits for future expansions and renovations.

Each of the new electrical services will include electrical transfer equipment to permit the future connection of portable electrical generators to the respective buildings during utility outages.

Since some of the buildings require an uninterrupted electrical supply during construction, the design includes temporary power connections to provide the necessary power during the construction and change-over periods. Delta will assist in the scheduling of construction in order to minimize construction outages of the electrical system.

If you would like to know more about Delta's electrical capabilities, please contact David George at dgeorge@deltaengineers.com.

Written By: David George, PE, Senior Electrical Engineer (607) 231-6633



184 Court Street
Binghamton, NY 13901
(607) 231-6600
www.deltaengineers.com